

cassini
The world in vision



Cassini Connect OR

From Diagnostics to the OR — Connected by Design.

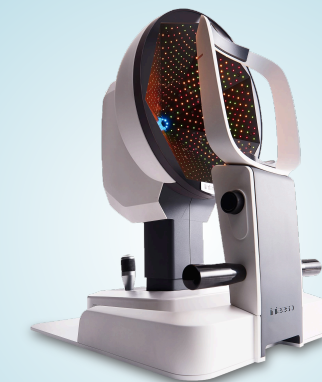
The Cassini Connect OR Platform

A single diagnostic foundation with modular, connected extensions

Streamlined FLACS
Integration



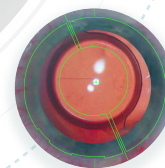
Connected
Planning



Cassini Ambient



Microscope-Agnostic Design



Real-Time Alignment

Redefining Surgical Synergy

Cassini Connect OR is a flexible, digitally connected platform designed to support the way surgeons operate—linking diagnostics, planning, and intraoperative visualization while integrating alongside existing equipment.

Live Alignment and Tracking

Iris-pattern recognition and live tracking supports real-time alignment within the surgical view, adapting to ocular motion during surgery.

Connected Planning

Diagnostic data is shared across the platform, supporting continuity without requiring manual re-entry or workflow disruption.

Streamlined FLACS Integration

Optional FLACS connectivity supports direct transfer of diagnostic data to select systems, streamlining integration into existing surgical workflows.

Cassini Ambient

The diagnostic foundation of the Connect OR platform.



Cassini Ambient provides the diagnostic foundation for cataract and refractive planning by delivering highly repeatable corneal measurements with low intra-measurement variability. This diagnostic reference is carried forward to support continuity across planning and intraoperative visualization.

The combined use of multicolor LED and infrared illumination, paired with automated capture, improves imaging efficiency and reduces motion-dependent inconsistencies.

Measurement Method

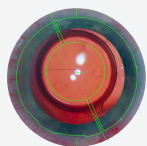
Reflection-based LED topography

Key Characteristics

- ✓ Instantaneous acquisition of anterior and posterior cornea
- ✓ Supports data continuity from preoperative planning throughout surgery

Components Configured for Continuity

Each component is designed to operate with Cassini Ambient while preserving diagnostic continuity across the surgical pathway.



Cassini Guidance System

(SaMD)

Provides intraoperative visualization and real-time alignment using preoperative data captured with Cassini Ambient.



Surgical Planner (Ambient Module)

(Software)

Structures and communicates diagnostic data across the Cassini Connect OR platform, preserving continuity from preoperative assessment throughout surgery.



FLACS Connectivity

(License)

Optional software supports transfer of diagnostic data to select femtosecond laser systems as part of a streamlined surgical workflow.

"The integration of the Cassini Ambient improves accuracy, which is what we're about - to provide the patient the best results the first time. The ease of use in the clinic and the operating room is second to none."

Shachar Tauber, MD

Mercy Clinic Eye Specialists, MO, USA

Flexible Workflow Integration

Designed to complement existing OR environments—not redefine them.

Microscope-agnostic design supports flexible integration within existing surgical environments.

For practices operating with femtosecond laser systems, direct transfer of preoperative diagnostic data to select platforms supports continuity across laser-assisted workflows.



From Data Continuity to Confident Decisions

Cassini Connect OR is designed to preserve diagnostic clarity from preoperative assessment through intraoperative alignment—supporting confident surgical decision-making while allowing practices to operate within their existing environments.

Clarity

Diagnostic insight remains continuous and accessible from preoperative assessment through the surgical view.

Simplicity

Modular components integrate into existing workflows, reducing friction while preserving clinical intent.

Longevity

A scalable architecture designed to support evolving surgical techniques, technologies, and practice models.

Streamline and synergize
with Cassini Connect OR.

Cassini Technologies B.V.
The Hague, Netherlands
support@cassini-technologies.com

cassini-technologies.com

cassini
The world in vision

Not approved for sale in all markets. Product availability and specifications may vary by region.
MKT-BR-001-V01